



# GRDC UPDATE

CAIGE ANNUAL MEETING, 18<sup>TH</sup> MAR 2019

PREPARED BY PIP WILSON, MANAGER WHEAT, GENETIC TECHNOLOGIES



**GRDC**

GRAINS RESEARCH  
& DEVELOPMENT  
CORPORATION

## Background

- CIMMYT germplasm has been imported as part of GRDC investments since 1996, with ICARDA germplasm added in 2008
- Originally limited to wheat, with barley and durum added in 2012
- Historically, germplasm from CIMMYT has been very important to the Australian wheat industry with 89% of varieties from 1973 to 2003 having at least one CIMMYT parent in their pedigree (Brennan & Quade, 2006)
- In the early 2000s, Brennan and Quade calculated that CIMMYT and ICARDA had the following benefits/cost for Australian grain growers:
  - \$30 million pa benefit for bread wheat
  - \$1.8 million pa benefit for barley
  - -\$1.2 million pa cost for durum wheat

# CAIGE PROGRAM 2019 - 2021

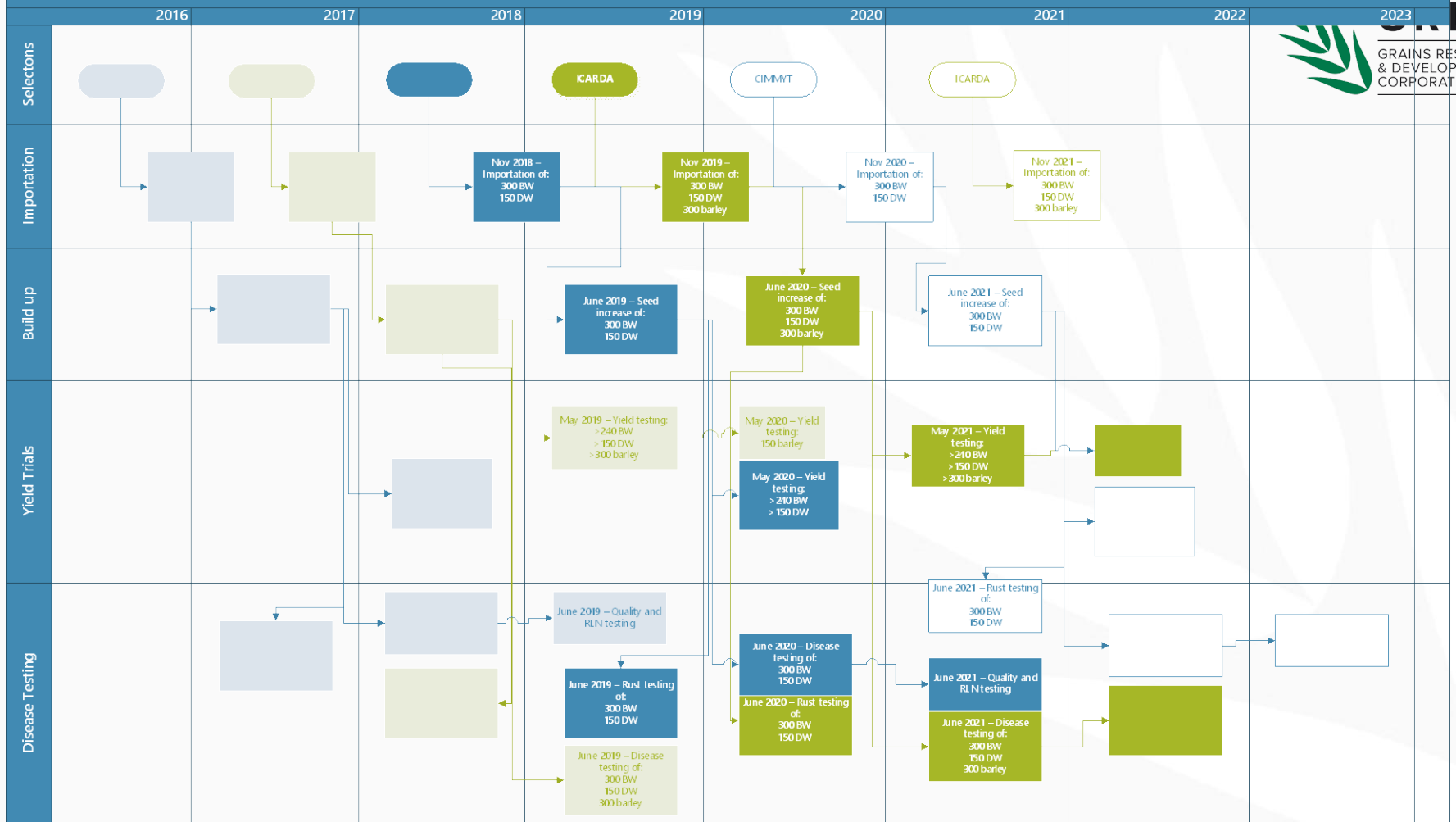
## Consistencies

- The investment still co-ordinates the importation, quarantine and testing of CIMMYT and ICARDA bread wheat, durum wheat and barley
- Disease testing will continue as before as well as limited quality/defect testing
- Multi-environment yield trial analysis by SAGI will continue
- Maintaining our responsibilities to our Alliance agreements and the International Treaty on Plant Genetic Resources for Food and Agriculture (through SMTA) but the return of data to CIMMYT and ICARDA

# CAIGE PROGRAM 2019 - 2021

## Changes

- Importations will become more targeted (visit to each centre every second year; breeder selections rather than whole nurseries)
- More disease testing will occur in parallel with the seed increase
- Yield testing will involve both GRDC funded trials across the regions as well as breeder trials (data handling, participation agreement)
- CAIGE program will focus on the importation and testing of germplasm, will not incorporate the wider range of pre-breeding projects





# STAFF MOVEMENTS

## Senior Manager – Crop Protection R&D

Dr Emma Colson, Toowoomba



## Senior Manager – Biosecurity and Regulation

Dr Ken Young, Canberra

## Manager - Barley and Coarse Grains, Genetic Techn

Dr Brett Ford, Canberra



# Questions?

Grains Research and Development Corporation (GRDC)

A Level 4, East Building, 4 National Circuit, Barton, ACT 2600  
Australia

P PO Box 5367 Kingston, ACT 2604 Australia

T +61 2 6166 4500

F +61 2 6166 4599

[www.grdc.com.au](http://www.grdc.com.au)

 [@thegrdc](https://twitter.com/thegrdc)