

CIMMYT-ICARDA Database Project

Sandra Micallef



Data on website

- 2009 Quarantine Lists
 - ZIZ09 -> ICARDA imports
 - ZSF09 -> Primary synthetics
 - ZST09 -> Strategic Trial
 - ZVS09 -> Breeders' selections from 2008 visit
 - ZWB09 -> 31ESWYT
 - ZWW09 -> 18SAWYT
- Some of ICARDA pedigrees not in database
- Talks with ICARDA personnel to obtain data

Field data from 2008

	Location	HRWSN		SAWSN					IBWSN					ESWYT	
		ZWX45	ZWX05	ZWE07	ZWE06	ZWE05	ZWE45	ZWE04	ZWC08	ZWC07	ZWC06	ZWC05	ZWC45	ZWC04	ZWB08
Nurseries															
Harpreet	Ballarat								140						78
Field Data															
Harpreet	Meckering			104						96					
Harpreet	North Star			103						96					
Harpreet	Red Banks			107						102					
Harpreet	Temora			103						97					
Harpreet	Warracknabeal			104						100					
Russell	Cobbity		12		65	39					30	3			14
Russell	Elmore		12		65	39					30	3			14
Russell	Horsham		12		65	39					30	3			14
Douglas Lush	Bungunya	68	7		14	9	7				29	10	10	2	4
Douglas Lush	Childers	68	7		14	9	7				29	10	10	2	4
Douglas Lush	Culara	68	7		14	9	7				29	10	10	2	4
Douglas Lush	Theodore	68	7		14	9	7				29	10	10	2	4
Douglas Lush	Westmare	68	7		14	9	7				29	10	10	2	4
Douglas Lush	Billa Billa	135	38		66	55	59	4			90	20	18	34	31
Douglas Lush	Biloela	135	38		66	55	59	4			90	20	18	34	31
Douglas Lush	Gatton	135	38		66	55	59	4			90	20	18	34	31
Douglas Lush	Tulloona	135	38		66	55	59	4			90	20	18	34	31
Chris Moore	Wongan Hills -WS2N1		50												48
Chris Moore	Wongan Hills -WS2N2									168					
Chris Moore	Wongan Hills -YCCMT				57	91						32			

of entries in trial

Field data from 2008

		BREEDERS SELECTION	SYNTHETICS						KARNAL BUNT	SPECIAL TRAIT		HTWYT	ISWSN	
	Location	ZVS07	ZSF05	ZSE04	ZSD04	ZSF03	ZSF01	ZSE01	ZKB06	ZHC06	ZHC04	ZWZ04	ZWH56	ZWH05
Nurseries														
Harpreet	Ballarat													
Field Data														
Harpreet	Meckering													
Harpreet	North Star													
Harpreet	Red Banks													
Harpreet	Temora													
Harpreet	Warracknabeal													
Russell	Cobbity	362							13					
Russell	Elmore	346							13					
Russell	Horsham	363							13					
Douglas Lush	Bungunya		14	7	1	16	6	2	1	2			3	1
Douglas Lush	Childers		14	7	1	16	6	2	1	2			3	1
Douglas Lush	Culara		14	7	1	16	6	2	1	2			3	1
Douglas Lush	Theodore		14	7	1	16	6	2	1	2			3	1
Douglas Lush	Westmare		14	7	1	16	6	2	1	2			3	1
Douglas Lush	Billa Billa		5	38	14	26	39	24	7	19	7	3	5	
Douglas Lush	Biloela		5	38	14	26	39	24	7	19	7	3	5	
Douglas Lush	Gatton		5	38	14	26	39	24	7	19	7	3	5	
Douglas Lush	Tulloona		5	38	14	26	39	24	7	19	7	3	5	
Chris Moore	Wongan Hills -WS2N1								13					
Chris Moore	Wongan Hills -WS2N2													
Chris Moore	Wongan Hills -YCCMT									22			14	

of entries in trial

Rust Data - 2008

		HRWSN	ISWSN	SAWSN			IBWSN		BREEDERS SELECTION
Rust Data	Location	ZWX03	ZWH03	ZWE07	ZWE03	ZWE02	ZWC07	ZWC03	ZVS07
Meiqin	Narrabri								558
Harbans	Cobbity			176			182		
Grant Hollaway	Horsham			176			181		
Andrew Milgate	Wagga Wagga	34	35		88	43		100	



2008 Analysis

Home >> 2008 analysis

search...

Search

Main Menu

- Home
- Query Germplasm
- GWIS FAQs
- Contact GWIS
- CIMMYT-ICARDA Projects
 - Latest project news
 - Projects coordination
 - Quarantine
 - Germplasm Enhancement Trials (GET)
 - International Adaptation Trials (IAT)
 - Durum Wheat Project
 - Synthetics Project
 - DArT project
 - LMA Phenotyping
 - Root Disease
 - Rust Disease
- Useful Links
- Upcoming Conferences and Meetings



Germplasm Enhancement 2008 Trials Analysis

(Australian Trials only)

2008 - ANALYSIS DATA FOR 2008 GET	DataFile
The BLUEs file contains a worksheet for each trial with predicted BLUPs and standard error, for each trial for the following traits : Grain Yield, Establishment score, 1000 grain weight, Plant height, Tillering and Zadok score.	2008 GET predicted BLUPS
This file contains plotting points for the ordinations of the GET and LiveStock Trials for 2007 and 2008	2007/2008 GET & Livestock ordinations

GET data

- 2001-2003 GET data
- 2004 GET data
- 2005 GET data
- 2006 GET data
- 2007 GET data
- 2008 GET data
- 2009 GET Data

GET Analysis

- 2005 analysis
- 2006 analysis
- 2007 analysis
- 2008 analysis

IWIS database

- New person working on IWIS conversion (to ICIS) at CIMMYT
- By the end of this year
 - All breeders will be using ICIS fieldbook
 - All data will be in ICIS
 - Pedigree corrections will be done in ICIS
 - Genebank transactions handled in ICIS
- Two database releases each year
 - Data from CIMMYT, ICARDA, Australia, Canada

Updates on Website

<http://cage.lafs.uq.edu.au>

- Newsletters
- Durum page
- FAQ page
 - How to use CAGE website (*under construction*)
- Database querying interface updated
 - Same database as standalone version
 - Germplasm lists tab

ICIS2009 meeting

- Participants
 - CGIAR centres (CIMMYT, IRRI, ICARDA, WARDA)
 - University of Queensland
 - Agriculture and Agrifood Canada
 - BayerCrop Science (Rice & Bioinformatics)
 - Nunhems
 - Canola Breeders Western Australia

ICIS2009 - updates

- New features for searching and loading data
- Search by CID/SID for wheat pedigrees



Search for: Name GID Attribute Cross(Single) CID/SID

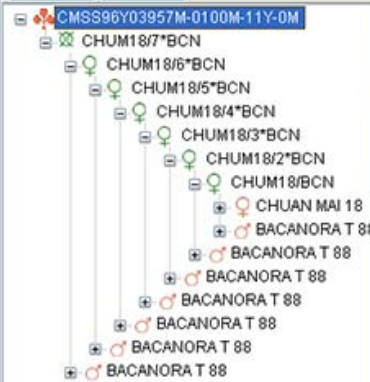
Name: Go More

Name Type: CID: SID:

Names (no. of hits : 1)	Method	Location	Unique ID
CHSS96Y03957M-0100M-11Y-0M,QT14612,BW31559,38IBWSN199,37IBWSN257,37IBWSN258,C0500-130,DSB		CINMYT - TOLUCA	IWIS 12-2201664

< >

Tree



Generative Derivative

Generation History :

- CHSS96Y03957M-0100M-11Y (2201663)
- CHSS96Y03957M-0100M (2201660)
- CHUM18/7*BCN (299086)

Germplasm Characteristics

Preferred Name	CHSS96Y03957M-0100M-11Y-0M	Date Named	1997- -	Name Location	CINMYT - TOLUCA
Germplasm Creation Method	SELECTED BULK SF	Germ. Date Creation	1997- -	Germ. Location	CINMYT - TOLUCA
Cross Expansion	CHUAN MAI 18/7*BACANORA T 88				
Generation No.	BC7(F4,S2)DSB	GID	2201664	Unique ID	IWIS 12-2201664

Names/Attributes | Relatives | Neighborhood | **Lists** | Study Data | Stocks

List/s where this Germplasm is present

Names/Attributes | Relatives | Neighborhood | Lists | Study Data | Stocks

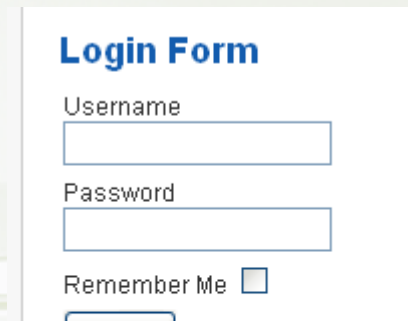
Alternative Names	
Type	Name
QTNO	QT14612
ACCNO	BW31559
ITEST	38IBWSN199
ITEST	37IBWSN257
ITEST	37IBWSN258
LNAME	C0500-130
LNAME	C0400K-027
AABBR	35IBWSN322
AABBR	34IBWSN304
AACCNO	BW38079
AACCNO	BW37653
AACCNO	BW33408
AACCNO	BW36050
SELHIST	CHSS96Y03957M-0100M-11Y-0M
ZCODE	304 ZWC01
ZCODE	27 ZWB04
ZCODE	102 ZWC04
ZCODE	103 ZWC04
ZCODE	199 ZWC45
ZCODE	343 ZWC03
ZCODE	322 ZWC02

ICIS2009 - updates

- New features for searching and loading data
- Search by CID/SID for wheat pedigrees
- Can assign sequential accession numbers
- BARCODE tool (inventory system)
- Customisable interfaces & troubleshooting tools
- MBP - Molecular Breeding Platform (GCP)
 - Web-based portal
 - Information system to integrate data services
 - Make existing tools available
 - Develop analysis, prediction and simulation tools
 - Develop information network
- ICIS2010 - Perth, Australia (hosts: CBWA)

Reminders

- Any data exchange needs to have **at least one** of the following
 - GID
 - CID/SID
 - Quarantine code
- Register at website
 - Templates download
 - Database download



Login Form

Username

Password

Remember Me



User Menu

- [Your Details](#)
- [Submit an Article](#)
- [Submit a Web Link](#)
- [Logout](#)

User Details

Welcome to the registered user area of our site.

Copyright © 2009 Global Wheat Information System. All Rights Reserved.
Joomla! is Free Software released under the [GNU/GPL License](#).

Something to smile about

You know you've been on the computer too long when you are reading a book and look for the scroll bar to get to the next page



THANK YOU